

PRODUCT INFORMATION PACKET

Model No: 048S17D2086

Catalog No: D143

Fan and Blower Motor, 0.33 HP, 1 Ph, 60 Hz, 115 V, 1800 RPM, 48 Frame, DP



Regal and Marathon are trademarks of Regal Rexnord Corporation or one of its affiliated companies.

©2024 Regal Rexnord Corporation, All Rights Reserved. MC017097E



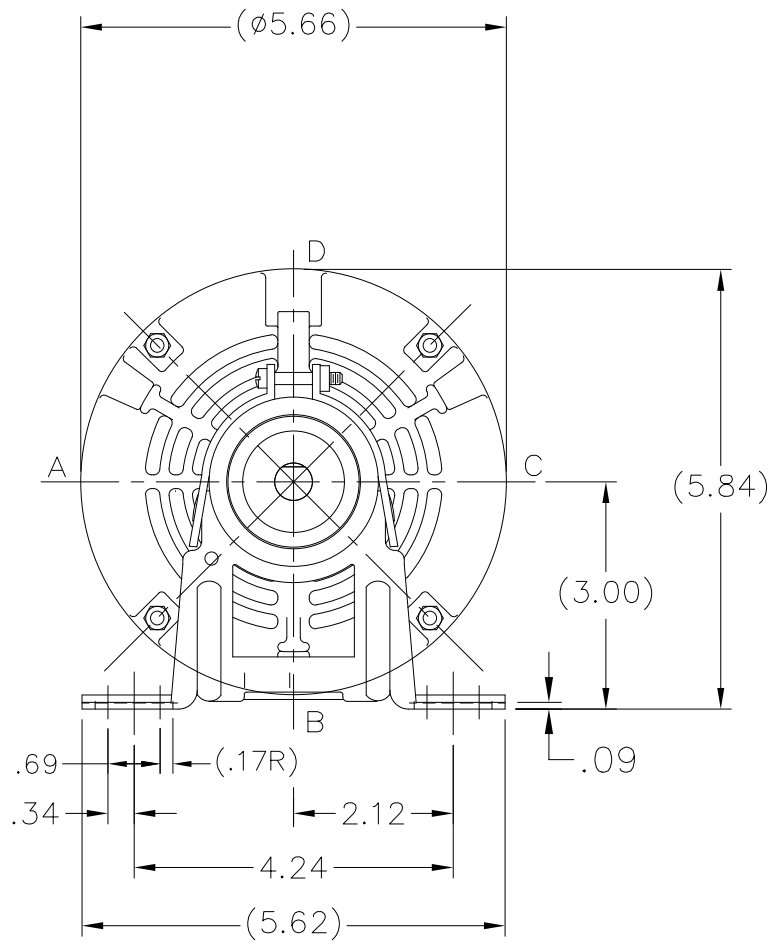
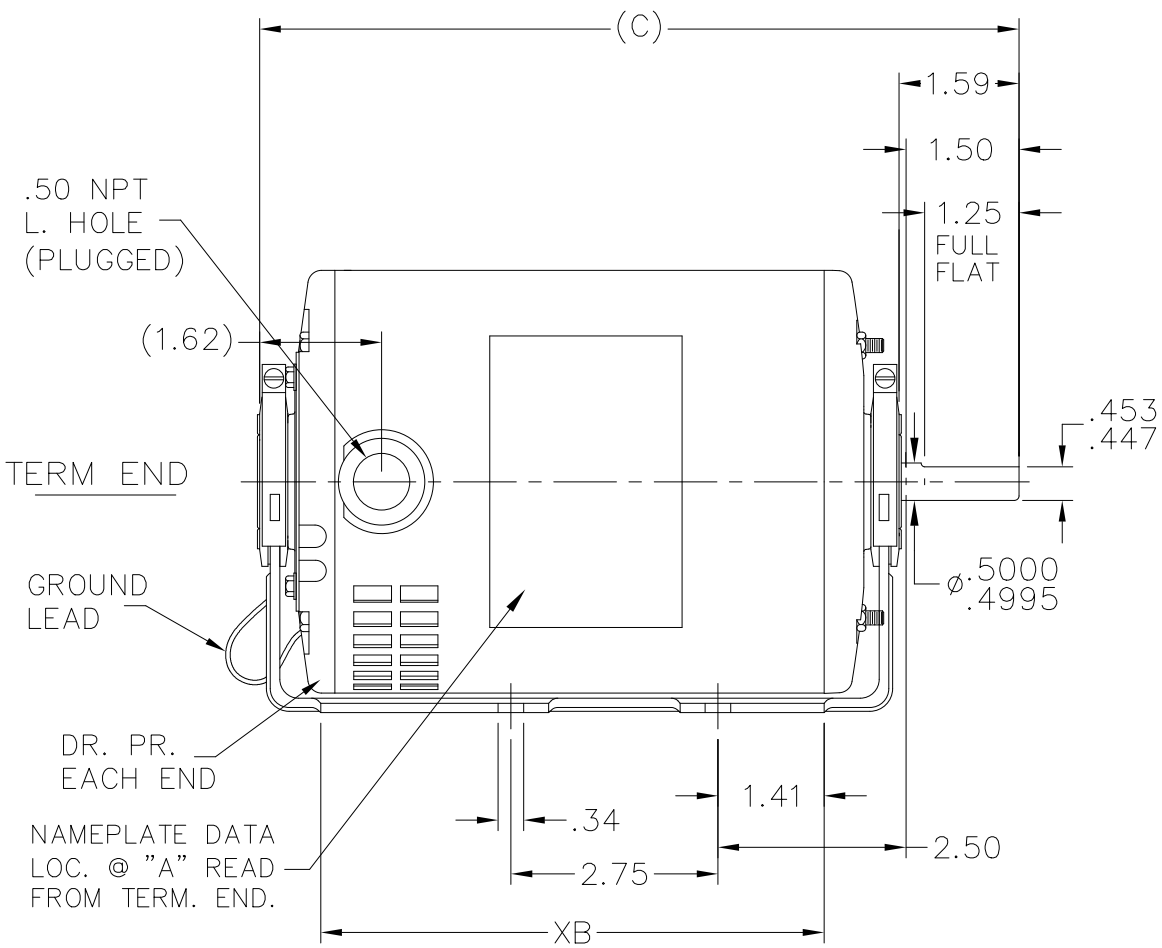
Nameplate Specifications

Phase	1	Output HP	0.33 Hp
Output KW	0.25 kW	Voltage	115 V
Speed	1725 rpm	Service Factor	1.35
Frame	48	Enclosure	Drip Proof
Thermal Protection	Automatic	Efficiency	62 %
Ambient Temperature	40 °C	Frequency	60 Hz
Current	6.1 A	Power Factor	61.5
Duty	Continuous	Insulation Class	B
Design Code	NO DESIGN CODE	KVA Code	M
Drive End Bearing Size	6203	Opp Drive End Bearing Size	6203
UL	Recognized	CSA	Y
CE	N	IP Code	22
Number of Speeds	1		

Technical Specifications

Electrical Type	Split Phase	Starting Method	Across The Line
Poles	4	Rotation	Selective Counterclockwise
Resistance Main	0 Ohms	Mounting	Resilient Base
Motor Orientation	Horizontal	Drive End Bearing	Ball
Opp Drive End Bearing	Ball	Frame Material	Rolled Steel
Shaft Type	NEMA 48	Overall Length	9.34 in
Frame Length	5.75 in	Shaft Diameter	0.500 in
Shaft Extension	1.59 in	Assembly/Box Mounting	F1 ONLY
Outline Drawing	A-SS75097-575	Connection Drawing	A-EE7195

This is an uncontrolled document once printed or downloaded and is subject to change without notice. Date Created:08/23/2024



DASH	FR.	C	XB		DASH	FR.	C	XB	
550	48	9.09	5.69	06-25-2007	625	48	9.84	6.44	
575	48	9.34	5.94		650	48	10.09	6.69	06-25-2007
600	48	9.59	6.19		675	48	10.34	6.94	

TOLERANCES UNLESS SPECIFIED

DEC.	INCHES
.X	±.1
.XX	±.03
.XXX	±.005
.XXXX	±.0005
ANG	±7'30"



Regal Beloit America, Inc.

						DRAWN RM 11-12-1990	
						CHK ML 11-13-1990	
						APPD TG 11-13-1990	
03	CHG FROM MARATHON TO RRX TEMPLATE PER ECR-0233452	MD	4/30/24	DS	.XX	±.03	TITLE OUTLINE
02	REDRAWN ON AUTOCAD. CN41440.	NB	06-26-2007		.XXX	±.005	48 FR.
01	NEW DRAWING. 3753603	RM	11-12-1990		.XXXX	±.0005	MAT'L.
NO.	REVISION	BY & DATE		CHK	ANG	±7'30"	FINISH

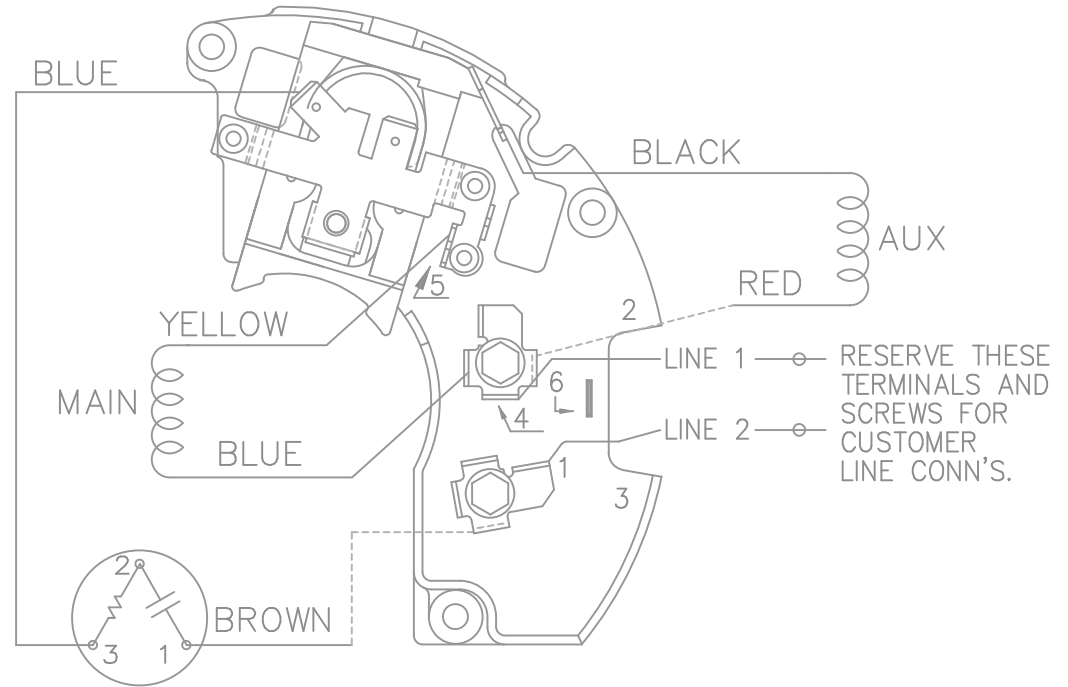
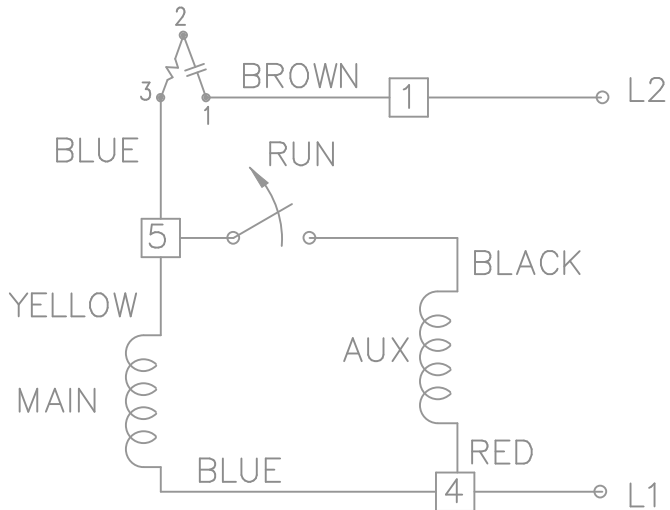
THIS DRAWING IN DESIGN AND DETAIL IS OUR PROPERTY AND MUST NOT BE USED EXCEPT IN CONNECTION WITH OUR WORK ALL RIGHTS OF DESIGN AND INVENTION ARE RESERVED THIS IS AN ELECTRONICALLY GENERATED DOCUMENT - DO NOT SCALE THIS PRINT

RFP	
DIST	WP

CAD FILE ss75097

SIZE	DRAWING NO.	PAGE	OF	REV.
A	SS75097			03

SINGLE VOLTAGE – SPLIT PHASE
 REVERSIBLE ON TERM BOARD
 WITH OVERLOAD PROTECTION



VIEWING TERMINAL END

C.C.W. ROTATION SHOWN.

FOR C.W. ROTATION INTERCHANGE
 YELLOW & BLUE LEADS ON TERM 5 & 4.

DASH LINES INDICATE LEADS CONNECTED
 TO MOTOR SIDE OF SWITCH.

			TOLERANCES UNLESS SPECIFIED			DRAWN ML 01-27-1998			
			DEC.	INCHES		CHK GK 02-05-1988			
5	REDRAWN ON AUTOCAD	RWR 06-15-2004	ML	.X ± -	TITLE CONNECTION DIAGRAM 48 FR. SINGLE VOLTAGE REVERSIBLE	APPD DRN 03-11-1988	SCALE 1=1		
4	REVERSED L1 AND L2 CN19709	AJS 01-16-1995	GK	.XX ± -		REF			
3	REVISED LINE 2 LOCATION CN6427	RM 01-28-1991	GK	.XXX ± -		FMF			
2	ADDED CUSTOMER CONNECTION NOTE CN6011	BW 08-03-1989	GK	.XXXX ± -		PREV			
NO.	REVISION	BY & DATE	CHK	ANG ± -	FINISH				
THIS DRAWING IN DESIGN AND DETAIL IS OUR PROPERTY AND MUST NOT BE USED EXCEPT IN CONNECTION WITH OUR WORK ALL RIGHTS OF DESIGN AND INVENTION ARE RESERVED THIS IS AN ELECTRONICALLY GENERATED DOCUMENT - DO NOT SCALE THIS PRINT			RFP		CAD FILE ee7195	SIZE A	DRAWING NO. EE7195	PAGE 1 OF 1	REV. 5
			DIST	LB					



MARATHON ELECTRIC CORPORATION
TYPICAL PERFORMANCE CURVE for AC MOTOR

Customer

Curve at

115 Volts
60 HZ
0.33 HP

HP 0.33

PHASE 1

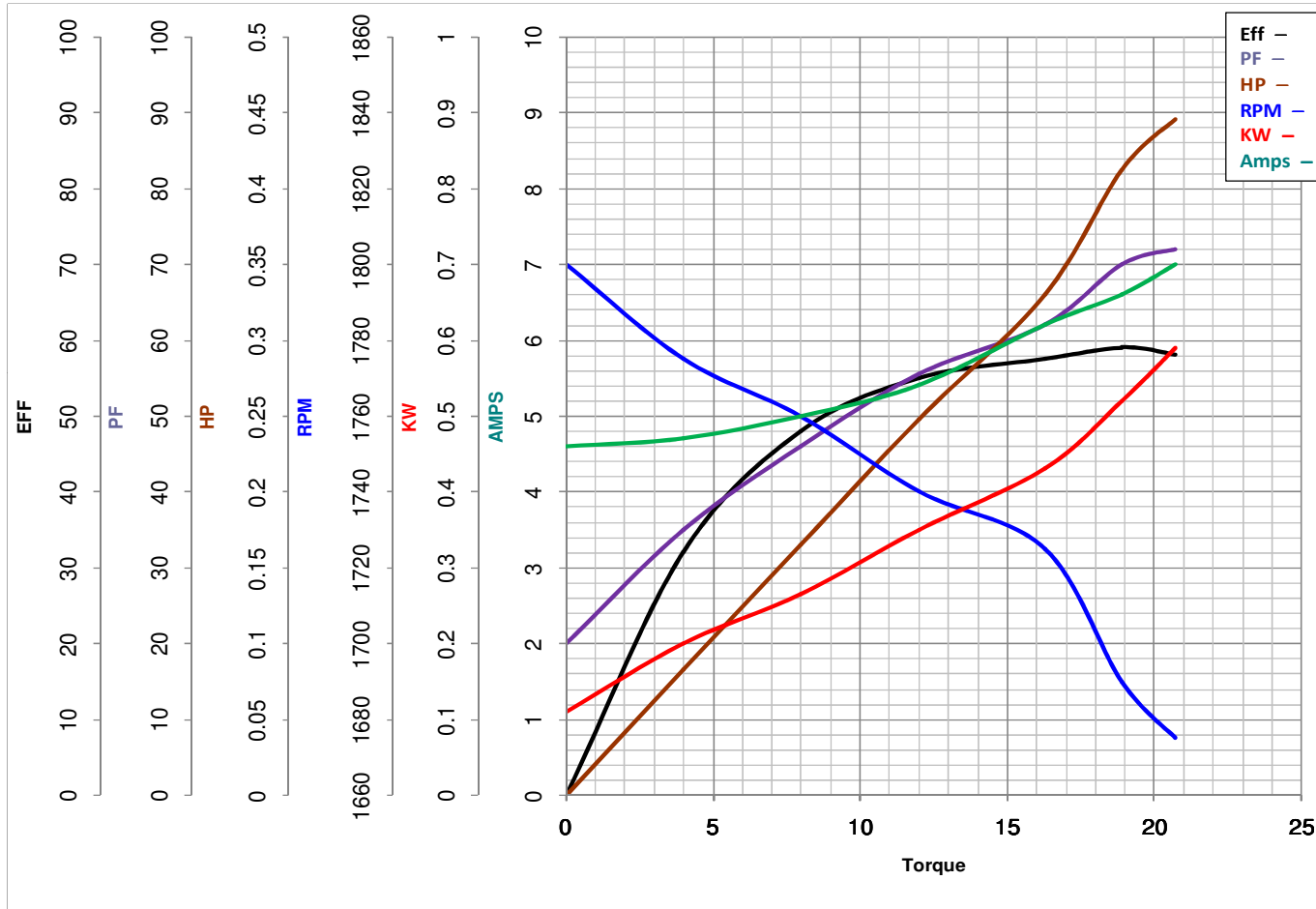
Model No 48S17D2086

VOLTS 115

Catalog No D143

HZ 60

RPM 1725



Torque in Oz.Ft

FL TORQUE 16.3 Oz.Ft
BD TORQUE 36.9 Oz.Ft
LR TORQUE 22.9 Oz.Ft

FL AMPS 6.1
PU TORQUE 34.9 Oz.Ft
LR AMPS 31

WINDING SE484121-1

Date 1/7/2019